



## 8 Gladstone Terrace

Barrow-In-Furness, LA14 4HR

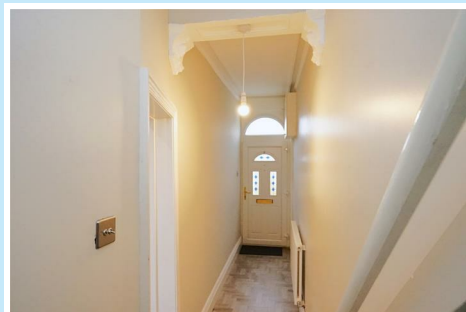
Offers In The Region Of £185,000



# 8 Gladstone Terrace

Barrow-In-Furness, LA14 4HR

**Offers In The Region Of £185,000**



*Situated within the highly sought after Hawcoat location. A beautiful home finished to a high standard ideal for a first time buyer. The property boasts many original features including character fireplaces which are highlighted by modern and contemporary finishes. Externally the property boasts a forecourt to the front and a spacious rear yard.*

- Highly Desirable Location
- Stylish Interior Design
- Contemporary Kitchen
- Close to Pubs/Restaurants
- Gas Central Heating
- Original Features
- Forecourted Home
- Spacious Yard
- Double Glazing
- Council Tax Band - A

This attractive terrace home boasts a characterful bay window and forecourt to the front aspect. Upon entering the property you will find a welcoming hallway.

The first reception has been fitted with plush grey carpeting and boasts traditional covings, bay window and black gas Victorian style fire with surround. The second reception room has been fitted wood effect flooring, a brick effect inset fireplace with spot lighting and original features. The kitchen has been fitted with a modern range of cream gloss and grey concrete effect wall and base units. The integrated appliances include a fridge freezer, dishwasher, washing machine, an oven, combination microwave oven and induction hob.

To the first floor there are two well proportioned bedrooms and a bathroom. Both bedrooms benefit from traditional picture rails with a feature fireplace to the second bedroom. The bathroom has been fitted with a traditional three piece suite comprising of a close couple WC, a vanity unit with freestanding basin and a 'P' shaped bath with over bath rainfall shower head.

Externally to the rear you will find a generous size paved yard with outbuildings for storage.

## Lounge and Dining Room

12'4" x 26'5" (3.77 x 8.06 )

## Kitchen

8'5" x 7'6" (2.58 x 2.29 )

## First Floor Landing

## Bedroom One

10'5" x 13'7" (3.19 x 4.16 )

## Bedroom Two

7'11" x 12'9" (2.42 x 3.89)

## Bathroom

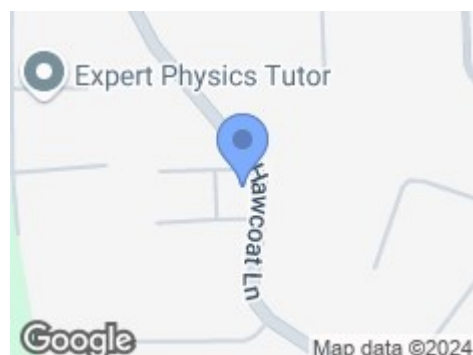
7'3" x 8'7" (2.23 x 2.62 )

## Entrance Hall





## Road Map



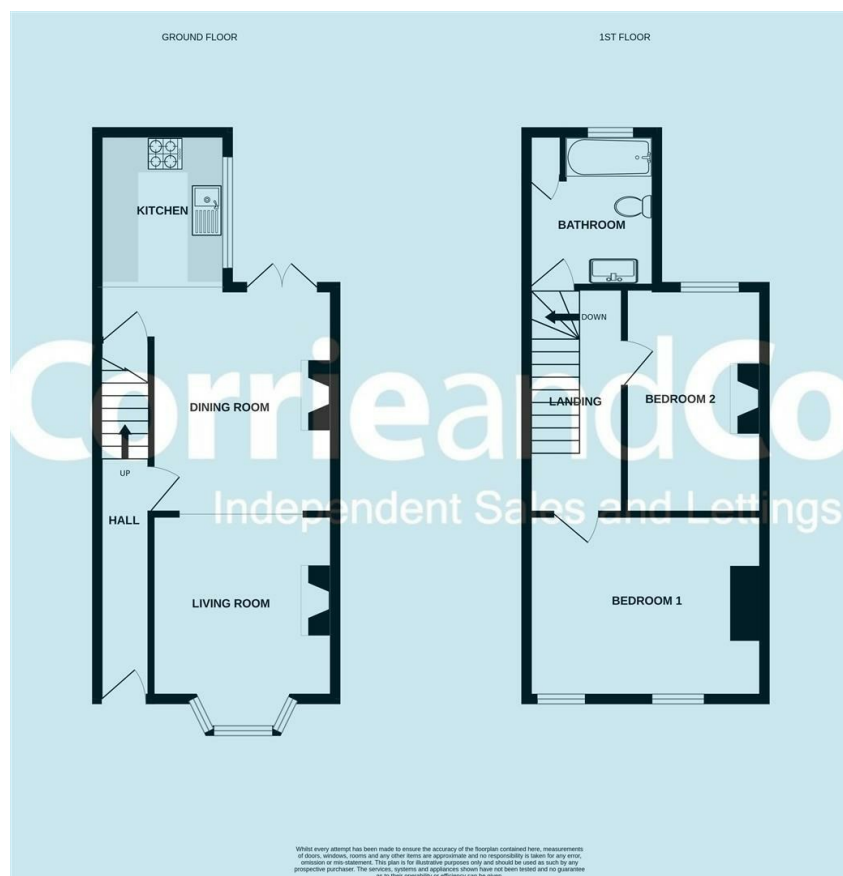
## Hybrid Map



## Terrain Map



## Floor Plan



Corrie and Co aim to sell your property at the best possible price in the shortest possible time. We have developed a clear marketing strategy to ensure that your property is fully exposed to the local, regional and national market place and we are confident that we can provide a marketing service second to none. Our Sales Team offer:

- Full colour contemporary sales literature with floorplans
- A full programme of local / regional advertising and promotion on the Corrie and Co and Rightmove websites
- 24/7 promotion in our Barrow, Ulverston and Millom offices
- Professional viewing service and prompt feedback
- Experienced, friendly staff
- Eye catching 'For Sale' board

To ensure your move is looked after, we can help you with an Energy Performance Certificate and arrange a free mortgage and finance review. We also provide a competitive No Sale – No Fee conveyancing service with well known and trusted local solicitors. Our valuation and sales advice is impartial, completely free with no obligation.

Unlike many High Street Estate Agency chains, Corrie and Co are wholly independent and can therefore recommend the mortgage and lender that is most suitable for your needs. Our aim is to provide quality advice and expertise at all times so that you can make an informed decision every step of the way.

